

How to Use the EcoFlow Delta 2 Max



We will go over the basics of how to use an EcoFlow Delta 2 Max battery to power important medical devices during power outages.

- Unpacking your battery
- Choosing where to place your battery
- How to plug in and charge your battery
- How to use your battery
- How to read the LCD screen

The same information is provided in the How to Use the EcoFlow Delta 2 Max video.

Document last updated: 10/31/2024

Created by Cassandra Bowers



Center for Inclusive Design
and Engineering (CIDE)

UNIVERSITY OF COLORADO DENVER | ANSCHUTZ MEDICAL CAMPUS



COLORADO
Department of Health Care
Policy & Financing

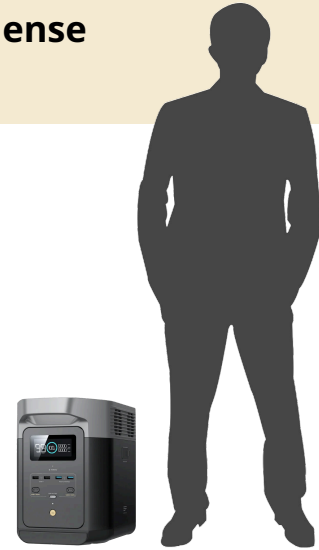
Unpacking Your Battery

Be prepared: The EcoFlow Delta Max 2 battery is very dense and heavy.

It weighs 50 lbs, which is the same as a large bag of dog food or a mini-fridge.

When the battery arrives, you may need assistance to lift and carry it inside your home.

Note: once you've plugged in the battery and confirmed that it's and charging, feel free to throw the shipping box away.

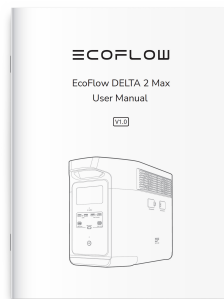


Now let's go over what comes in the box:

Delta 2 Max Battery



User Manual & Warranty Card



AC Charging Cable



The AC charging cable charges the battery from your wall outlet. This is the cable you will likely use the most.

Car Charging Cable



DC Charging Cable

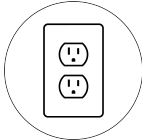


The car and DC charging cables have more specific uses, and depending on your needs, you may not use them. We'll explore these cables further in the module about How to Use Your Battery to Survive in Place.

Choosing a Location

When choosing a location to place your battery, remember these crucial DOs and DON'Ts.

Do



Plug the battery directly into a wall outlet



Choose a location where the battery can always remain plugged in and fully charged. That way, you'll have immediate backup power if the power goes out.



Place the battery in the room with your important devices, ideally with your devices already connected to it. That way, your devices will have immediate backup power if the power goes out.

Don't



Don't place the battery in an extremely hot or cold environment. For example: near a fireplace, in the garage, or in direct sunlight



Don't plug the battery into a power strip, extension cord, or surge protector



Don't leave the battery unplugged, as you won't be ready for unexpected power outages. The battery is economical, so leaving the battery plugged in should add less than \$1.50 to your electricity bill per month.



Don't place the battery in a separate room from where you'll need the power. This will make it more challenging to power your devices if the power goes out.

Charging Your Battery

On the back of the battery, you'll find a cover that flips open. This reveals the AC input port, where you'll plug in the battery for charging.

1

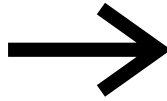
Find a wall outlet

2

Plug the AC charging cable into the wall outlet

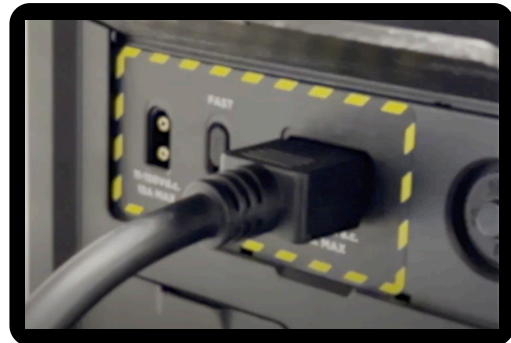
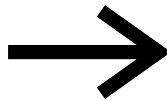
3

Lift the flap covering the AC Input Port



4

Plug the other end of the AC charging cable into the battery



Please note: There are additional ways to charge your battery: using a solar panel or plugging it into your car while the engine is running.

How to Use Your Battery to Power Devices



First, let's go over the front of the battery.

On the front, you'll find ports that can power and charge smaller devices. You can choose whatever port matches the cable on your device.

Power

USB On/Off



This button will turn the power to the USB ports on or off. If you plug in your devices and they are not receiving power, make sure this is set to "On."

Main power button



This turns the entire battery on and off.



Output Ports

2x USB-A



These ports are for charging and powering devices, like smartphones and tablets.

2x USB-A Fast Charging



These ports allow for faster charging times than standard USB-A ports.

2x USB-C



These ports can charge and power devices that require more power, like laptops.



Please note: All of the ports on the EcoFlow Delta 2 Max have on/off buttons. They will not provide power to your devices unless you turn them on.



Now we'll go over the back of the battery.

On the back, you'll find the AC ports, as well as output ports for specific situations and devices.

Power

AC and DC(12V) On/Off*



These buttons will turn the power to the AC and DC ports on or off. If you plug in your devices and they are not receiving power, make sure this is set to "On."

AC Input Toggle



This is a slider that allows you to adjust how quickly the device will charge, which you can toggle between 400 and 1800 watts.



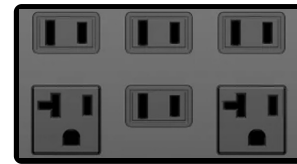
Car/Solar Input Ports



These ports can be used to charge the battery using your car or solar panels.

Output Ports

6x AC Ports



These sockets look and function like regular wall outlets. They allow you to power various devices and appliances, from small electronics to larger items like refrigerators and power tools.

DC & Car Ports



These ports are only useful for specific situations and devices; most users will never use them.



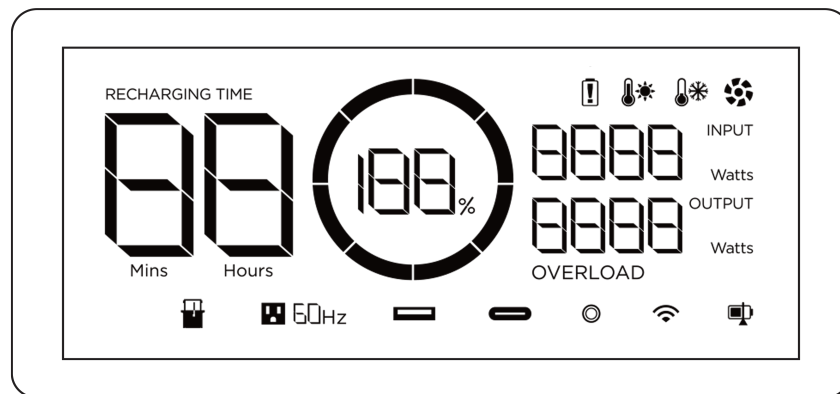
***Please note:** If nothing is powered by these ports for 12 hours, they will automatically shut off. You will need to turn the ports back on before powering your devices.

Reading the LCD Screen

Let's go over how to read the LCD screen on your battery.

In general, the battery's LCD screen shows the current status of your battery.

Please note: the display will turn itself off after five minutes. To turn it back on, tap the main power button.



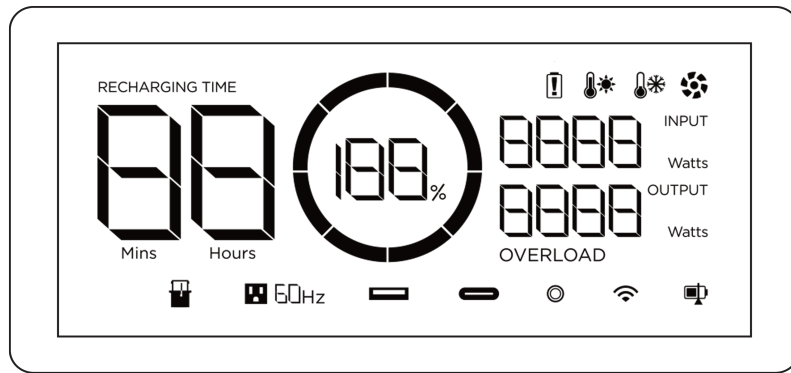
Battery percentage: This tells you what percentage of the battery's capacity is remaining. The circle around the battery will rotate when the battery is successfully charging.

Please note: If the battery isn't charging, disconnect all inputs and outputs. Then, press and hold the main on/off button until you hear a beep and see the word 'OFF' appear on the screen. The display will refresh. At this point, you can verify if the device is now charging.



Remaining charging/discharging time: When plugged in, "Recharging" will tell you how long until the battery is fully charged. During a power outage, "Discharging" will tell you how much battery power you have left.

Please note: depending on what devices you are powering, the amount of time remaining will vary greatly. The battery's remaining time estimate becomes accurate only after you connect and power on your devices. Once you've done this, the estimate automatically updates to display the remaining time.



At the bottom of the screen, there are several icons that show which ports are currently on.



AC output



USB-A output

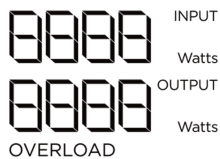


USB-C output



12V DC output

If you plug something in and it doesn't begin to charge, you can check on this screen to see whether those ports are on or off.



Input power and Output power: These show how much power is going in or out of the battery. This can be useful if you want to know how much power in wattage your devices are using.



Wi-Fi status: This shows whether the battery is connected to the internet. This is important if you are using the Ecoflow app to control your battery.



There are a few more icons that can help you keep track of the battery's health but shouldn't be relevant to normal use. We'll go over these icons and how to solve other common issues in more detail in Warranty and Troubleshooting.